



GST NO.: 29AHZPU5620Q1ZZ

An ISO 9001:2015 Certified Company

ROYAL INDUSTRIAL SUPPLIERS

QUALITY FASTENERS SPECIALIST



8310165941 / 9959457863

sales@royalfastenersindia.com

www.royalfastenersindia.com

TECHNICAL DATA SHEET

ULTRA LOW PROFILE TORX 6-LOBE SCREW



MATERIAL- STAINLESS STEEL

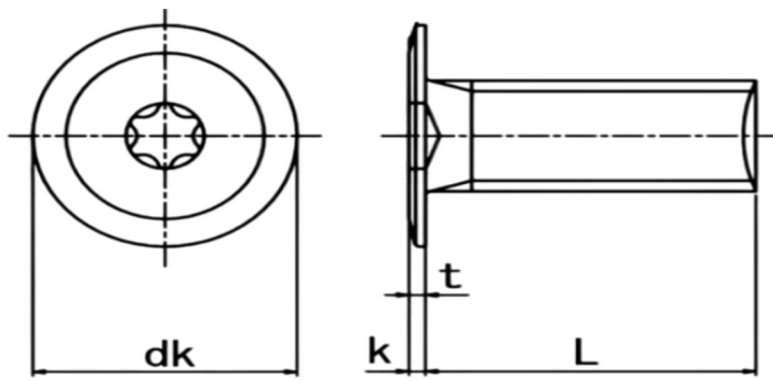
GRADE-SS304 (A2-70)

AS PER-NON-STANDARD

CATALOGUE NO. R4F85

INSTALLATION GUIDE

- SELECT THE CORRECT SIZE OF ULTRA LOW PROFILE TORX SCREW AND MATCHING TORX DRIVER OR BIT (T-SIZE).
- ENSURE THE MATING HOLE OR THREAD IS CLEAN AND FREE FROM DUST, OIL, OR DEBRIS.
- ALIGN THE COMPONENTS TO BE FASTENED IN THE CORRECT POSITION.
- INSERT THE ULTRA LOW PROFILE TORX SCREW INTO THE HOLE BY HAND TO START THREADING.
- PLACE THE TORX DRIVER FIRMLY INTO THE STAR-SHAPED RECESS OF THE SCREW HEAD.
- TURN THE DRIVER CLOCKWISE TO TIGHTEN THE SCREW EVENLY AND SECURELY.
- APPLY STEADY, CONTROLLED FORCE TO PREVENT CAM-OUT OR DAMAGE TO THE TORX RECESS.
- DO NOT OVERTIGHTEN TO AVOID STRIPPING THE THREADS OR DAMAGING THE SURFACE.
- ENSURE THE LOW-PROFILE HEAD SITS FLAT AND FLUSH WITH THE MATERIAL SURFACE AFTER INSTALLATION.
- USE A TORQUE DRIVER IF SPECIFIC TORQUE VALUES ARE REQUIRED.
- INSPECT THE FINAL INSTALLATION TO CONFIRM THE SCREW IS PROPERLY SEATED AND FIRMLY SECURED.



Parameter↓	Size→	M2x0.4	M2.5x0.45	M3x0.5	M4x0.7	M5x0.8	M6x1.0
Head Dia (dk)	Max	4.00	6.00	7.00	8.00	9.00	12.00
	Min	0.50	0.60	0.80	0.90	1.00	1.20
Head Thickness k	Max	0.60	0.70	0.90	1.00	1.15	1.35
	Slot Depth (t)	0.40	0.50	0.75	0.90	1.00	1.20
Tool	Size	T4	T5	T6	T8	T10	T20
Max. Tightening Torque Nm		0.15	0.30	0.60	1.50	3.10	5.00

Quote the PART NUMBER given below with your order/ inquiries:

All Dimensions in mm

Length↓	Dia→	M2x0.4	M2.5x0.45	M3x0.5	M4x0.7	M5x0.8	M6x1.0
3		R4F8502003					
4		R4F8502004	R4F8520504	R4F8503004			
5		R4F8502005	R4F8520505	R4F8503005	R4F8504005		
6		R4F8502006	R4F8520506	R4F8503006	R4F8504006	R4F8505006	
8		R4F8502008	R4F8520508	R4F8503008	R4F8504008	R4F8505008	R4F8506008
10		R4F8502010	R4F8520510	R4F8503010	R4F8504010	R4F8505010	R4F8506010
12		R4F8502012	R4F8520512	R4F8503012	R4F8504012	R4F8505012	R4F8506012
14		R4F8502014	R4F8520514	R4F8503014	R4F8504014	R4F8505014	R4F8506014
16		R4F8502016	R4F8520516	R4F8503016	R4F8504016	R4F8505016	R4F8506016
18		R4F8502018	R4F8520518	R4F8503018	R4F8504018	R4F8505018	R4F8506018
20		R4F8502020	R4F8520520	R4F8503020	R4F8504020	R4F8505020	R4F8506020
22			R4F8520522	R4F8503022	R4F8504022	R4F8505022	R4F8506022
25			R4F8520525	R4F8503025	R4F8504025	R4F8505025	R4F8506025
28				R4F8503028	R4F8504028	R4F8505028	R4F8506028
30				R4F8503030	R4F8504030	R4F8505030	R4F8506030
35					R4F8504035	R4F8505035	R4F8506035
40					R4F8504040	R4F8505040	R4F8506040
45						R4F8505045	R4F8506045
50						R4F8505050	R4F8506050

Sizes in BLUE are non-preferred. Availability is limited and MOQ is applied

Data is strictly informative

Note: All Austenitic Stainless-Steel Fasteners may exhibit some Magnetic Properties due to the Manufacturing Process.

Refer: ISO 3506-2 Annex F